



REMEDY 1000

SAFETY

FUSION



LARGE DIAMETERS FUSION

REMEDY 1000 is an independent, high-productivity welding machine driven by tracks and powered by a Diesel 3.6-cylinder in-line Turbo-Common Rail on-board generator. Designed for butt-welding HDPE and PP pipes from \varnothing 355 mm to 1000 mm (14" IPS ÷ 36" DIPS).

Suitable for ISO 21307 High Pressure and ASTM F2620 fusion standards.

REMEDY 1000 is available with welding cycle MANUAL or EASY LIFE SYSTEM.

**HIGH
PRODUCTIVITY**

INDEPENDENT

**3.6 CC
DIESEL ENGINE
TURBO COMMON RAIL**

TOTAL MOBILITY TO JOBSITE



VERSATILE

- Working range mm from \varnothing 355 mm to 1000 mm
- Working range inches from \varnothing 14" IPS to 36" DIPS
- Materials: HDPE, PP
- All Terrain welding machine
- Drives over 35% slopes
- In-ditch use friendly
- Controlled welding cycle up to 12 m - 40 ft
- Self-contained Generator on-board
- Heater/Facer on-board
- Insert - Fast-locking system
- Removable welding panel

ACCURATE

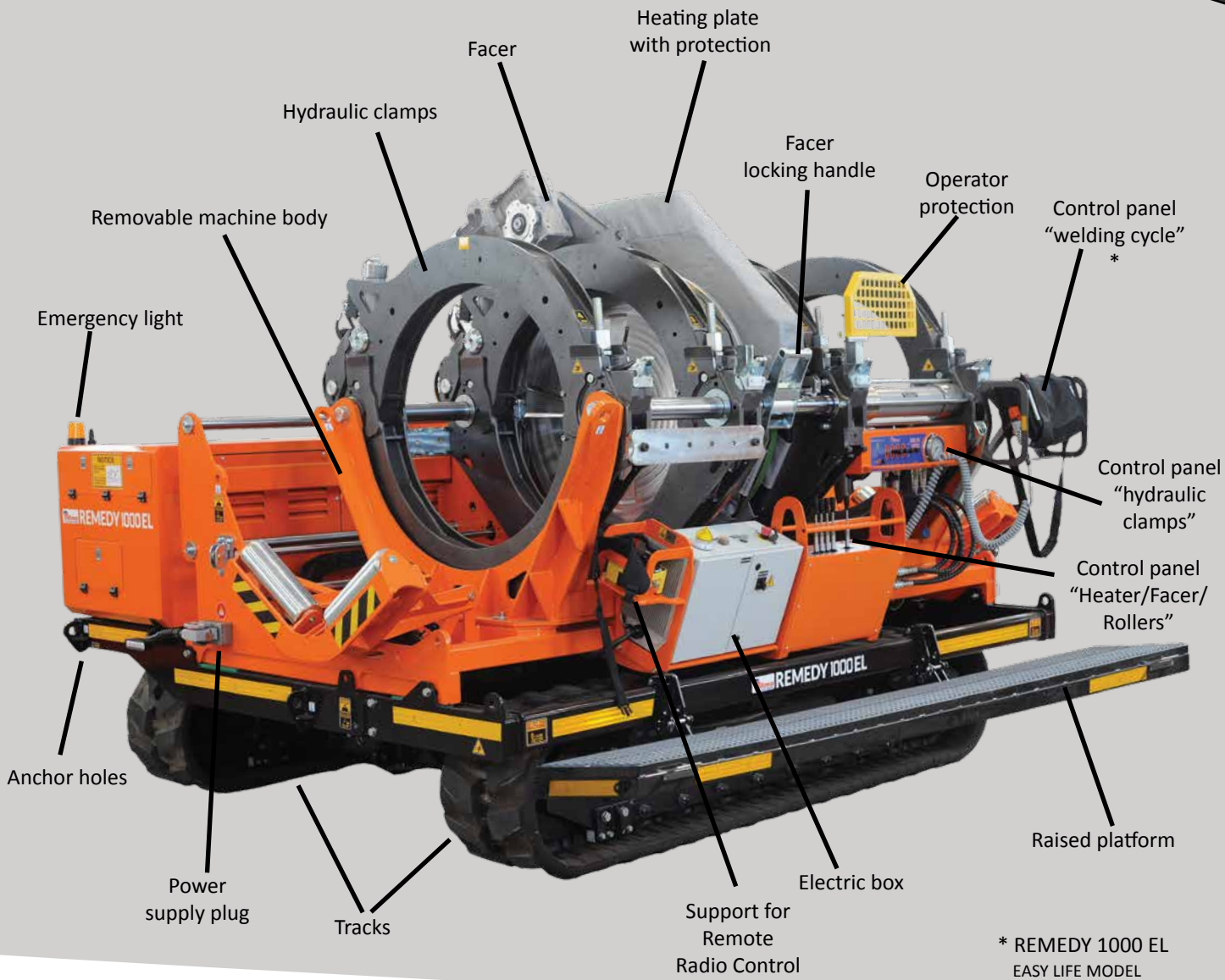
- EASY LIFE or MANUAL welding system control
- Designed to weld according to: ISO 21307 High Pressure ASTM F2620 standards
- GPS traceability*
- Data-logging report included*
- Report PDF via USB*
- Possibility to pre-set 20 customized welding cycles*
- Record up to 4000 welds*
- Welds fittings/easy set

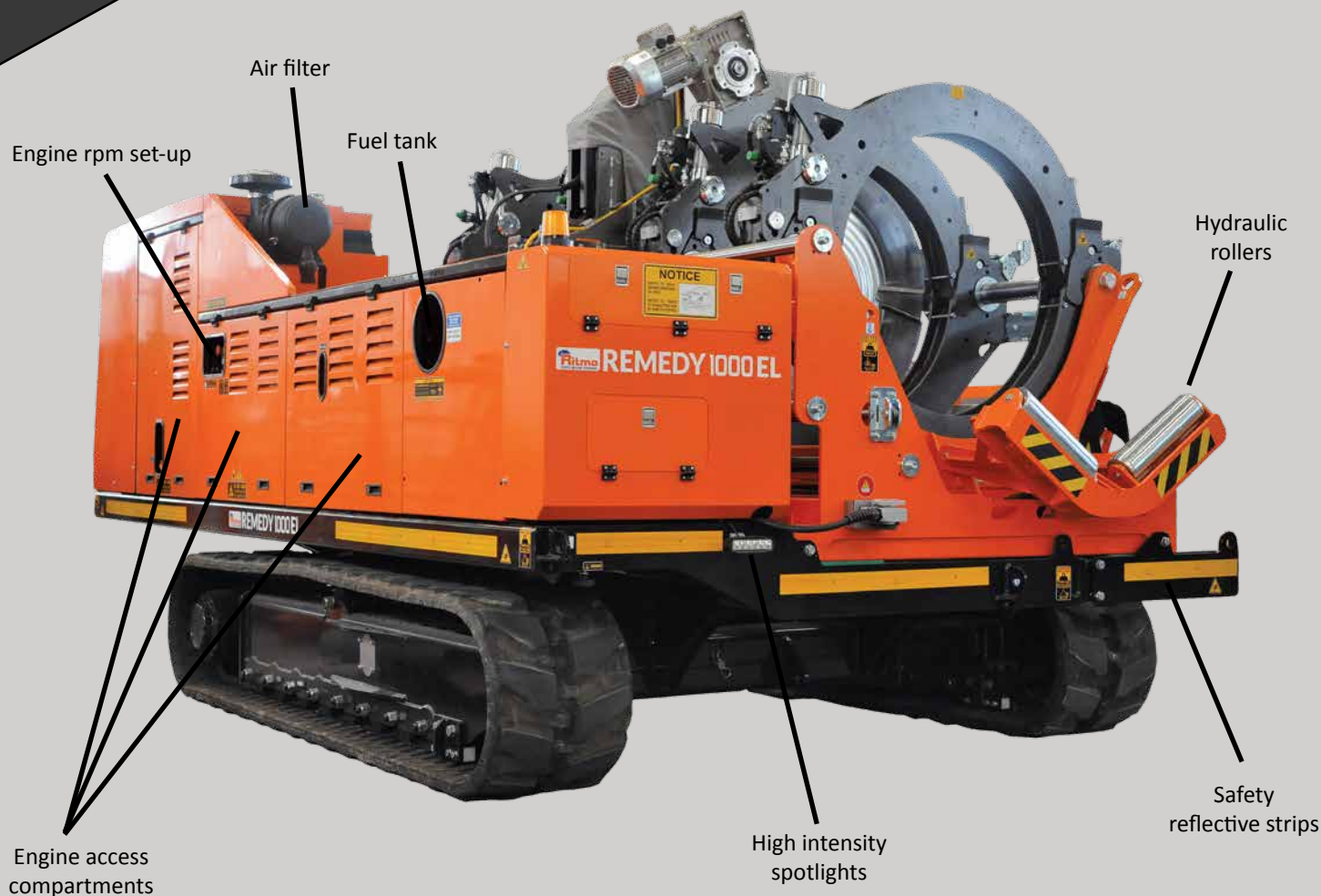
COMPLETE

- Self-propelled on track
- Hydraulic clamps
- Heating plate with hydraulic movement
- Facer with hydraulic movement
- Hydraulic side rollers
- Raised working position
- Remote control track up to 100 m
- Intuitive control panels
- Facer with safety microswitch
- Heating plate with a high temperature resistant casing
- Spotlights on welding area
- Auxiliary power plug 230 V

* REMEDY 1000 EL
EASY LIFE MODEL

www.ritmo.it





www.ritmo.it

DIFFERENCES BETWEEN REMEDY 1000 MODELS

| | REMEDY 1000 EL | REMEDY 1000 Manual |
|--|----------------|--------------------|
| International standards ISO 21307 HIGH PRESSURE and ASTM F2620 | √ | √ |
| Intuitive control panel | √ | √ |
| Welds fittings | √ | √ |
| Easy Life Welding System | √ | |
| Manual Welding Cycle | | √ |
| Data-logging | √ | |
| PRE-SET 20 customized welding cycles | √ | |
| GPS traceability | √ | |
| Memory 4000 cycles | √ | |
| Report PDF | √ | |
| Self-contained Generator on-board | √ | √ |
| Self-propelled on track | √ | √ |
| Remote control track | √ | √ |
| Remotely wire-controlled IN-DITCH USE up to 12 m (40 ft) | √ | √ |
| Carriage can be removed for in-ditch use | √ | √ |
| Hydraulic rollers | √ | √ |

EASY LIFE FUSION SYSTEM

HOW DOES IT WORK

Hardware and software have been developed to interact to each other sharing data during the entire workflow. Once set the welding parameters, the system guarantees the repetition of the welding cycle, avoiding errors. The operator only has to confirm the work phases on the control panel when asked to, just pushing a button. Besides, during the "welding phase", where sometimes some pressure adjustments are needed, the electronic system solve automatically this specific problem.

LET US
DELIVER VALUE

QUALITY IN WELDING

Pre-set 20 customized welding cycles
Easy Life system incorporates a data-logging
Save up to 4000 welds
PDF reports
USB port

www.ritmo.it



MANUAL FUSION WELDING CONTROLS

FREE TO CONTROL

Remedy 1000 is available with Manual Welding Control System.

Intuitive control panel allow an easy management of the welding cycle and every phase is manually controlled. Operator experience is fundamental.



THE SAFETY ZONE

PERFECT OVER ALL

Facer and Heating plate can be moved out of the clamping area



QUALITY ASSURED





RADIO REMOTE CONTROL

WIRELESS

The wireless control allows the operator to always move the welding machine safely and guarantees better management even during the positioning phases.



REMOVABLE
CARRIAGE
FOR TIGHT INSTALLATIONS



CONTAINER SHIPPING FLEXIBILITY

TRUCK'S DISTANCE

Is the size of a welding machine always a problem when shipping or when moving by container?
Now no longer. It only takes a few minutes to hydraulically restrain the width of the REMEDY 1000 EL tracks up to 222 cm (87.4"). This allows for better flexibility in shipping the welding machine.



Before



from 278 cm to 222 cm

from 100.3" to 87.4"



After





EASY MAINTENANCE FAST SOLUTION

SAVE TIME - SAVE MONEY

Easy access to periodic maintenance compartments. Cleaning the air filter, checking fuses, radiator cleaning and routine checks are quick and easy to perform.



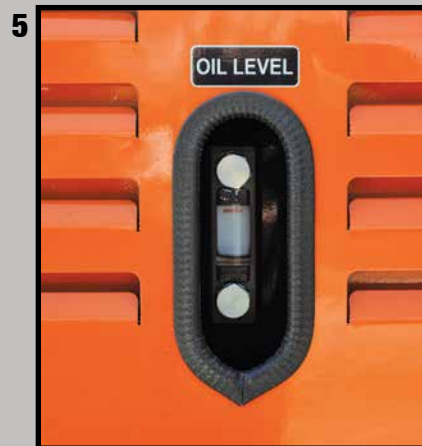
EXTRA DETAILS

THE PERFECT JOBSITE

EVERYTHING YOU NEED

Remedy 1000 has a number of small measures that improve efficiency on site.

- 1 - Digital display with hour counter, fuel percentage on board, engine rpm management during movement with settings between 1200 and 2300 rpm.
- 2 - Large compartment for refueling.
- 3 - Spotlights with high intensity LEDs: lighting of the welding area and spotlights for moving the welding machine.
- 4 - Auxiliary hydraulic couplings to control an external hydraulic unit.
- 5 - 6 The levels of the hydraulic circuits can be easily consulted.
- 7 - Storage compartment
- 8 - Socket to power the machine body of the welding machine with an external generator.
- 9 - 230 V single-phase socket to power a tool or a battery charger.





TECHNICAL FEATURES

| | |
|--|--|
| Working range | 355 ÷ 1000 mm; 14" IPS ÷ 36" DIPS |
| Materials | HDPE, PP For other materials contact RITMO S.P.A. |
| On board generator | 3600 cc - 85 kW 2300 rpm |
| Range speed diesel engine (no welding mode) | from 1200 rpm to 2300 rpm |
| Emmission compliance | EPA US TIER 4 FINAL, UE STAGE V |
| Fuel | Diesel |
| Fuel tank | 160 Litres (42.2 gal) |
| Autonomy min. | 10,5 Hours |
| Hourly consumption | max 15 Litres (3.9 gal) |
| Max absorption* | 32000 W |
| Power supply * | 400 V Three Phase 50/60 Hz |
| Max operator side noise | 79 dB (engine 2300 rpm) |
| Tracks driving speed | 1.5 Km/h or 4,5 Km/h (0.93 mph or 2.79 mph) |
| Length of tracks | 450 mm (17.7") |
| Max operating slope | 35% |
| Body machine sizes Max dimensions on site (H x W x D) | 2817 x 3530 x 3370 mm 9.2 x 11.5 x 11 ft |
| Body machine + tracks, platform max dimensions on site (H x W x D) | 3496 x 4424 x 2780 mm 11.4 x 14.5 x 9.4 ft |
| Tracks dimensions Min. (H x W x D) | 2159 x 4424 x 2220 mm 7 x 14.5 x 7,2 ft |
| Weight tracks and generator | 5500 Kg (12.125 lb) |
| Total weight of the machine at standard composition | 9300 Kg (20.500 lb) |

* The welding machine is independent, has a generator on board and does not require an external power supply. However, it is possible to connect an external generator to the machine body only. Recommended power 42000 W.



RITMO S.P.A

Via A Volta, 35/37 - Bressio di Teolo (Padova) Italy

Ph. + 39 049 9901888 Fax +39 049 9901993 - info@ritmo.it - www.ritmo.it